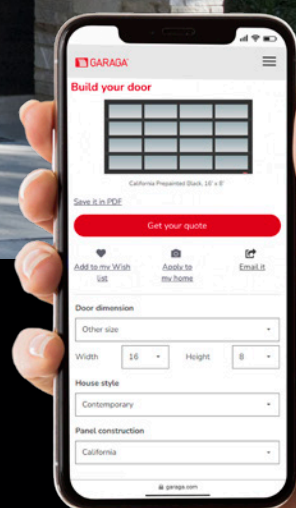


California™



Every detail guaranteed™



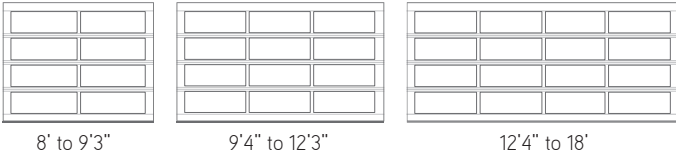
Build your garage door

Visualize your home with a new garage door. Visit garaga.com/designcentre or scan the QR code.

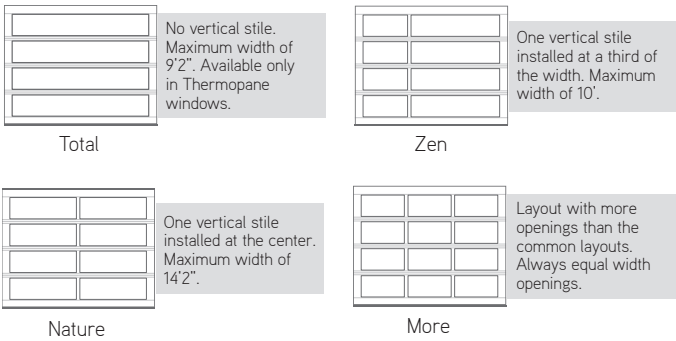


FULL VISION DOOR THICKNESS: 1 3/4" | ALUMINUM FRAME

COMMON LAYOUTS



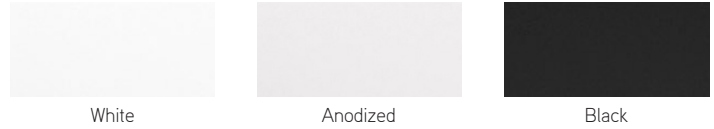
SPECIAL LAYOUTS



IMPORTANT - The full vision door should not be used for its insulation properties.

FRAME COLORS

Standard



Semi-custom[†]



[†]Semi-custom color doors are coated with an acrylic resin-based liquid painting.



WINDOWS

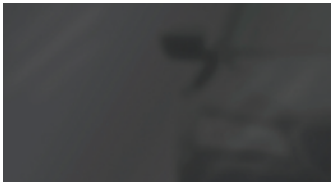


Clear



White Sandblasted

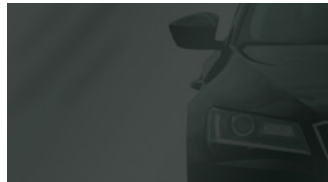
See all possibilities and specifications about the windows. Visit garaga.com/california and click on Windows or scan the QR code.



Black Satin



SuperGrey Tinted



Graylite



Mirrorpane



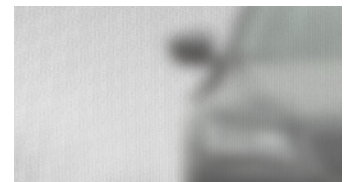
Bronze Tinted



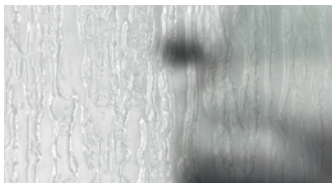
Green Tinted



Grey



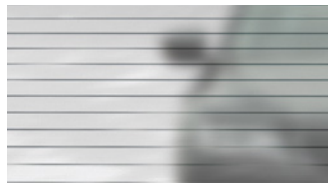
Screen



Niagara



Pinhead



Masterline

GLAZING OPTIONS

		Clear	Clear Low-E	Clear Laminated	White Sandblasted	Black Satin	SuperGrey Tinted	Graylite	Grey	Bronze Tinted	Green Tinted	Pinhead	Mirrorpane	Bronze Reflective	Glue Chip	Screen	Masterline	Niagara	Diamond	
Glass	Single Pane 1/8"	●			●	●	●		●	●		●								
	*Thermopane 7/8"	●	●	●	●	●	●	●		●	●	●	●	●	●	●	●	●	●	●
Acrylic	Single Pane 1/8"	●																		
	*Thermopane 7/8"	●																		

Availability: ● = California ● = California's Commercial Construction

*Thermopane and Triple Wall Structure: low additional fees apply.
Single Pane and Thermopane Glass have both sides tempered.

SIZES

Widths from 8' to 18', in 1" increments. Heights from 6'6" to 8', in 1" increments.
See your garage door dealer for more details on oversized doors available.

WARRANTY

Door sections: limited lifetime
Dura+ hardware: 2 years
Weatherstripping: 1 year

Windows: 10 years against seal defects
1 year for thermal break



info@garaga.com | garaga.com

US Head Office Canadian Head Office
1 844 918-2828 1 800 464-2724
Ponca City OK St-Georges QC



YOUR GARAGA DISTRIBUTOR



California, 6' x 8'6" and 16' x 8'6", Black aluminum frame, White Sandblasted glass

For all technical specifications for the California and the latest updates, visit www.garaga.com. Garaga has established continuous improvement programs for all its products. As a result of this ongoing quest, technical specifications for various doors are subject to change without notice. The door colors and the windows shown are as exact as printing techniques will allow. Please request an actual color sample. Trademarks and registered trademarks of Garaga Inc. are denoted by TM, ® and © respectively. © Garaga Inc. 2024 - All rights reserved - Printed in Canada

95361 - 01/2024

